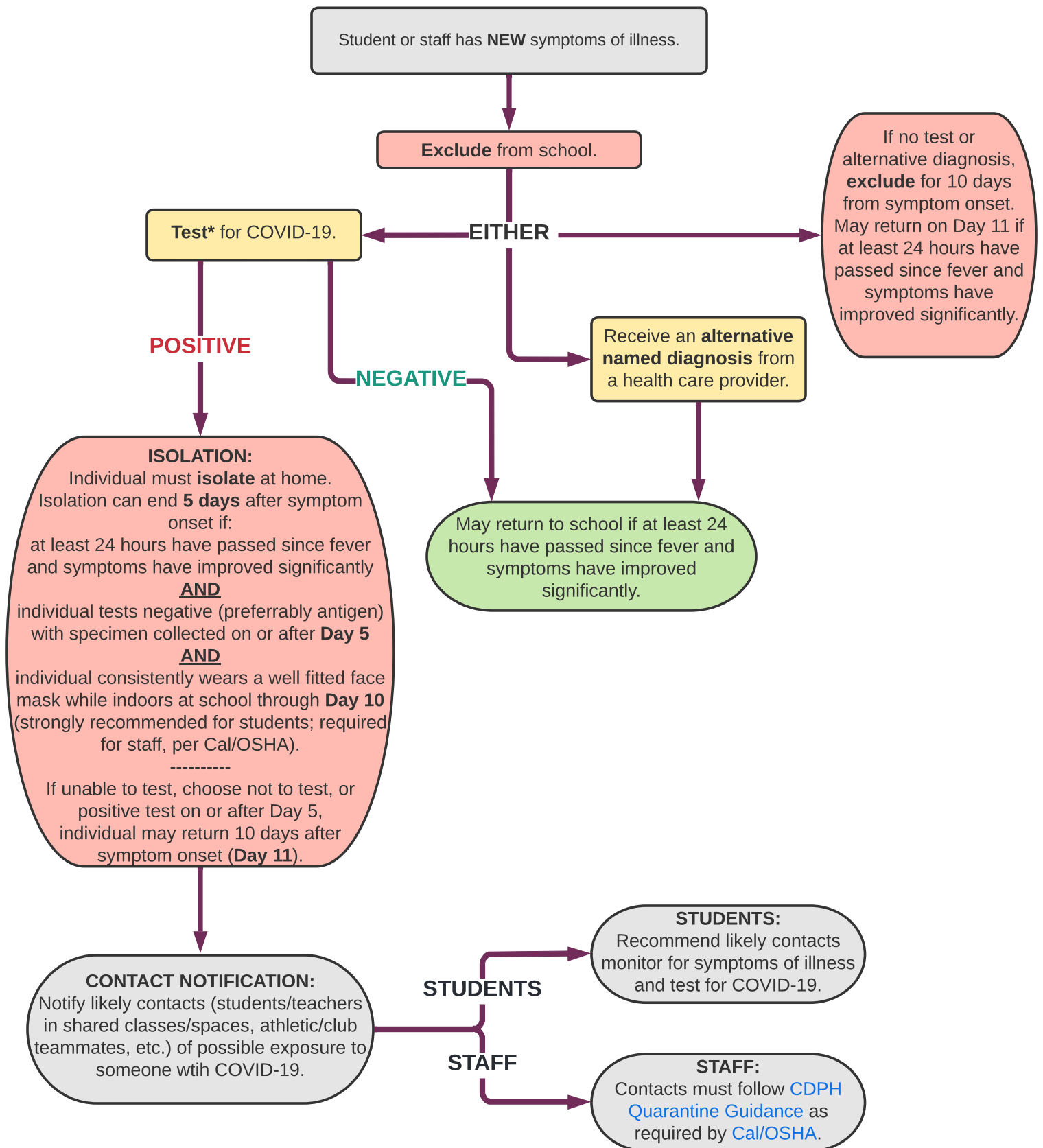


COVID-19 Decision Tree for Child Care, Pre-School, & K-12 Schools



* PCR or rapid antigen test are acceptable. Asymptomatic individuals who have tested positive for COVID-19 are not required to re-test for 90 days following their initial infection. However, if individuals develop new symptoms following a COVID-19 exposure, they should isolate and test.

July 25, 2022

SACRAMENTO COUNTY



Promote • Prevent • Protect